

ELYSIAN  
MANSIONS

PARK LANE



# A STUNNING ESTATE GARDEN

Situated amidst the largest private gardens in Tilal Al Ghaf, the Park Lane residences feature unfettered access to a lush, natural terrain, inspired by the world's grandest estates. Complementing the expansive gardens are the landscapes of the private Mansions, expertly designed to blur the lines between nature and architecture.

Owners can choose between a number distinct home types for these premium plots, with interior, exterior, and landscape designs tailored to your specifications.







# TILAL AL GHAF MASTERPLAN



ELYSIAN  
MANSIONS

- Sandy Beach
- Beach Cabanas
- Beach Volleyball
- Water Sports

- Central Park
- 18km Walking & Cycling Trails
- Table Tennis
- Tennis Court

- Indoor & Outdoor Gym
- Basketball Court
- Outdoor Cinema
- Skate Park

- Children's Play Areas
- Water Splash Park
- Swimming Pools
- Trampoline Parks

- International School
- Beach Restaurants & Cafés
- Community Town Centre
- BBQ Stations

- Daycare
- Holistic Healthcare Facility
- Mosques
- Retail Hub





# AN OASIS OF REFINED LIVING

Elysian Mansions is an exclusive, residential waterfront enclave abutting the lagoon of Tilal Al Ghaf. Inspired by the Elysian Fields of Greek mythology, this hallmark luxury neighbourhood conceived by Majid Al Futtaim offers the most distinctive and thoughtful residences to date.

These bespoke, expertly crafted mansions are tailored to your tastes, with generous spaces, stunning finishes, and expansive pockets of natural beauty woven throughout the homes.





DISCOVER  
YOUR  
PERSONAL  
PARADISE









QUIETLY  
SOPHISTICATED



# INTIMACY & HOSPITALITY



# CRAFTED WITH DISTINCTION

Led by contemporary architecture, yet rooted in classic home design, Elysian Mansions offers smart, technology-enabled homes with uncompromising aesthetics.







## KEYPLAN & PUBLIC REALM

01. Main Entrance  
02. Promenade  
03. The Pavilion  
04. Terraced Gardens

### Lagoonside

05. The Orchards  
06. The Alle  
07. The Dining Room  
08. The Clock Tower

09. The Kitchen Gardens  
10. The Water Gardens  
11. Sikka Gardens  
12. The Forest Walk

### Hilltop

13. The Tuileries  
14. The Maze Garden  
15. The Grand Lawn  
16. The library of trees

### Park Lane

17. The Beach Access  
18. The Private Beach  
19. Stargazing Room  
20. Parking Area

21. Informal Lawn  
22. Plazas





# A BESPOKE SANCTUARY



Grand double height entry



Access to exclusive beach & recreational lagoon



Secured gated community



Luxury marble flooring



Largest exclusive park in  
Tilal Al Ghaf



Stone cladded exterior facades



Emphasis on the indoor/outdoor  
relationship



Expansive terraces & outdoor  
spaces with upgrade options



Triple-height courtyards



Bespoke ergonomic & biophilic  
architecture



European kitchens with  
integrated appliances



Spacious walk-in closets with  
accessorized wardrobes



Car galleries for 6 to 8 cars



Elevator in each mansion



A selection of bespoke  
upgrades to suit your needs



Premium wooden flooring in  
bedrooms



# TAILORED TO YOUR TASTES

A selection of facade palettes, ranging from deep, moody stones to warm textured neutrals, captures the individual grandeur of each mansion—creating a bespoke and private oasis all your own.



Timeless

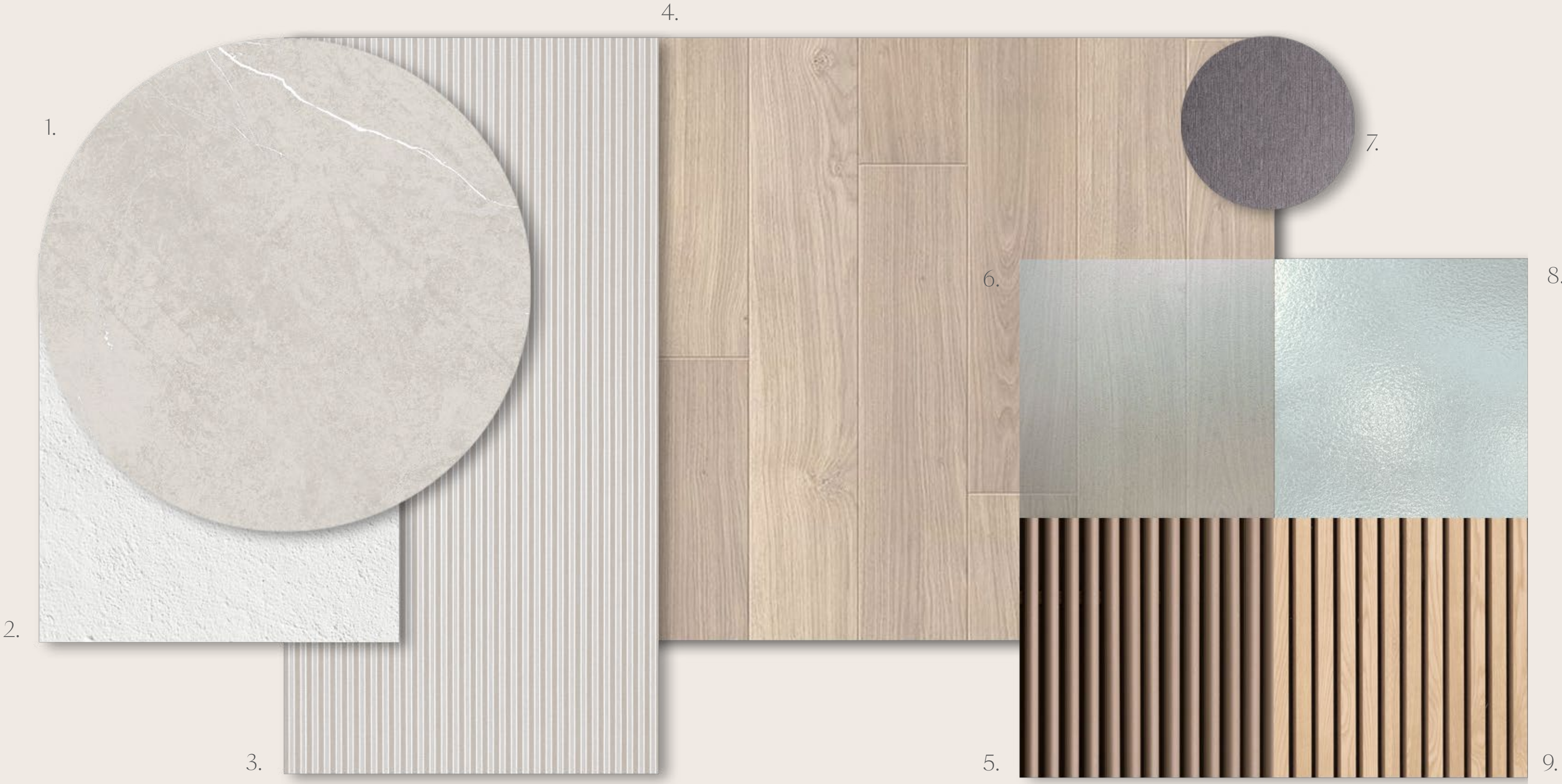


Prestige



# EXTERIOR FACADE MATERIALS TIMELESS

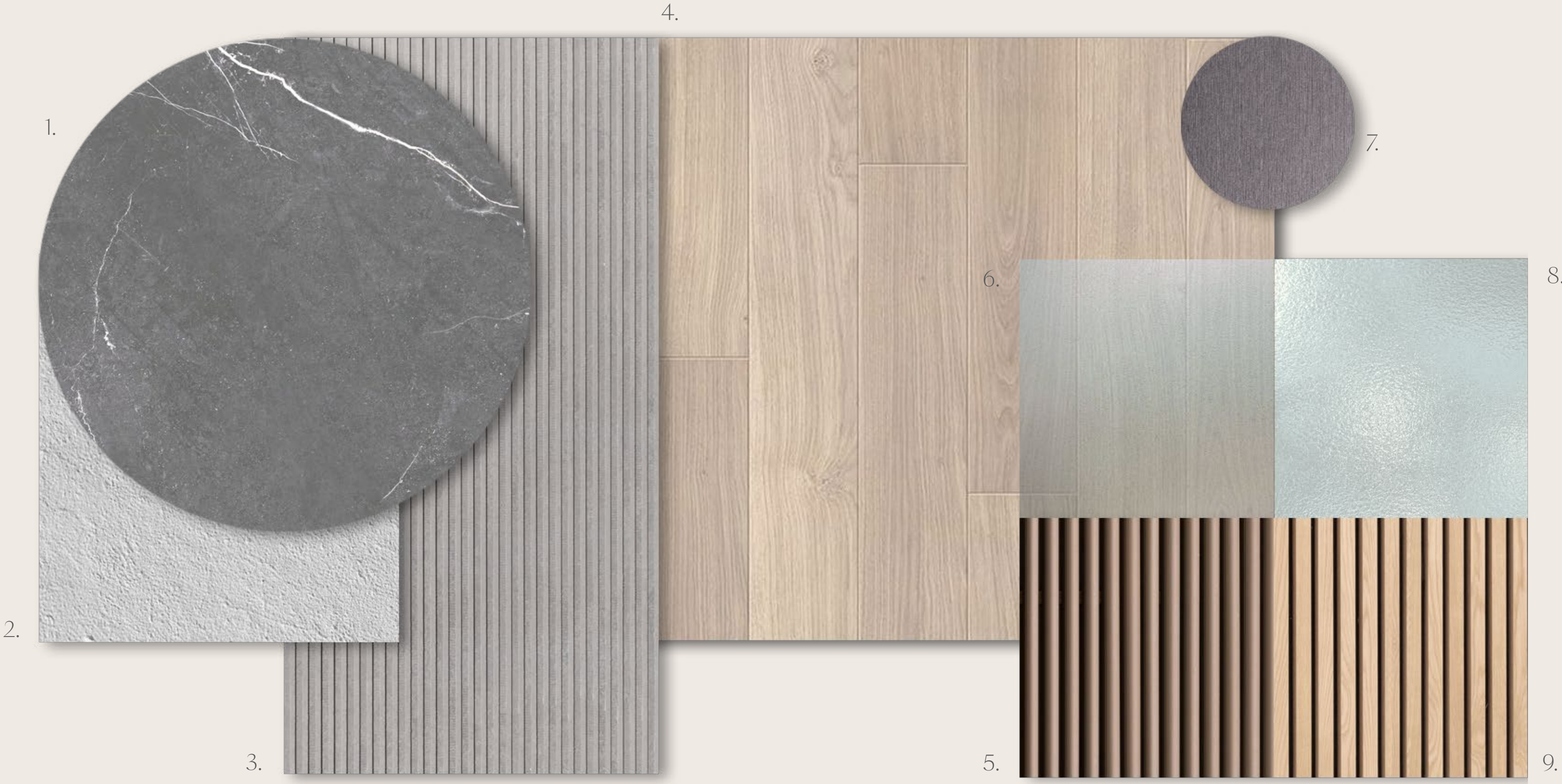
- 1. Stone Cladding
- 2. Render Paint
- 3. Textured Stone Cladding
- 4. Wood Effect Panels
- 5. Wood Effect Shutters
- 6. High Performance Glass
- 7. Metal Sheets
- 8. Glass Balustrade
- 9. Wood Effect Louvers





# EXTERIOR FACADE MATERIALS PRESTIGE

- 1. Stone Cladding
- 2. Render Paint
- 3. Textured Stone Cladding
- 4. Wood Effect Panels
- 5. Wood Effect Shutters
- 6. High Performance Glass
- 7. Metal Sheets
- 8. Glass Balustrade
- 9. Wood Effect Louvers





TAILORED TO YOUR TASTES

Inside the homes, a selection of interior palettes features rich, natural materials, including an array of veined marbles, carved timber, and charismatic metals, weave throughout the mansions, bestowing timeless, thoughtful elegance.



Pearl



Onyx



# INTERIOR MATERIALS MAIA, IRIS PEARL

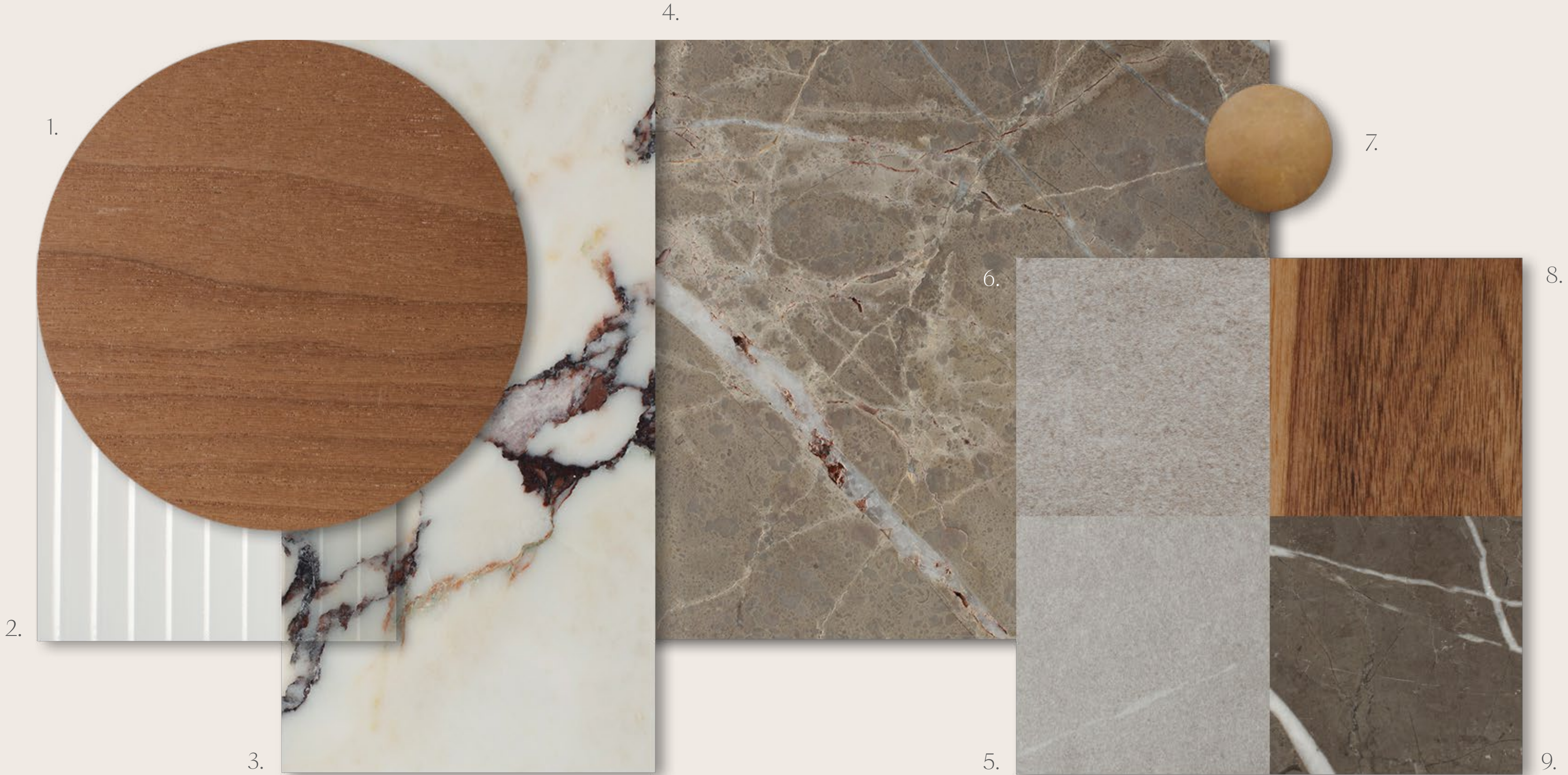
- 1. Kitchen and Wardrobe Veneer
- 2. Clear Fluted Glass
- 3. Kitchen Island Marble
- 4. Marble General Flooring and Master Bathroom
- 5. Secondary Bathroom Porcelain Floor Tiles
- 6. Secondary Bathroom Porcelain Wall Tiles
- 7. General Metal Accent
- 8. Bedroom Wood Flooring
- 9. Marble Vanity and Feature Wall





# INTERIOR MATERIALS MAIA, IRIS ONYX

- 1. Kitchen and Wardrobe Veneer
- 2. Clear Fluted Glass
- 3. Kitchen Island Marble
- 4. Marble General Flooring and Master Bathroom
- 5. Secondary Bathroom Porcelain Floor Tiles
- 6. Secondary Bathroom Porcelain Wall Tiles
- 7. General Metal Accent
- 8. Bedroom Wood Flooring
- 9. Marble Vanity and Feature Wall





# THE COLLECTION



M A I A











تلال الغاف  
Tilal Al Ghaf

ELYSIAN  
MANSIONS

MAIA - BACK - TIMELESS

















تلال الغاف  
Tilal Al Ghaf

ELYSIAN  
MANSIONS

MAIA - BACK - PRESTIGE



M A I A  
TYPE 1

Amenities

- Double Height Entry

Double Height Spaces

Private Home Elevator

Underground Car Gallery
- Formal Living Area

Two Family Living Areas

Guest Suite

His & Hers Walk in Closets
- Nanny Room

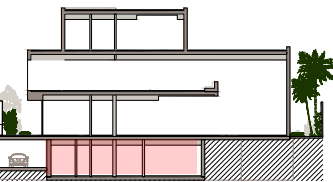
Driver's Room

Maid's Room

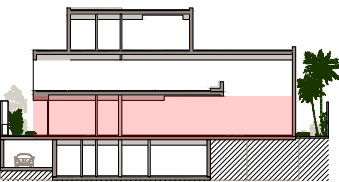
Sunken Garden

Internal Area	725 sqm / 7,804 sqft
Balcony/Terrace	68 sqm / 729 sqft
Garage	199 sqm / 2,139 sqft
Total Area	991 sqm / 10,672 sqft

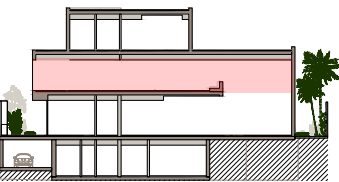
BASEMENT  
375 sqm / 4,040 sqft



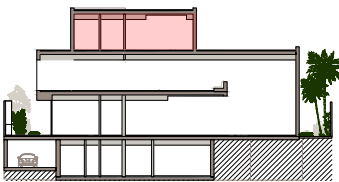
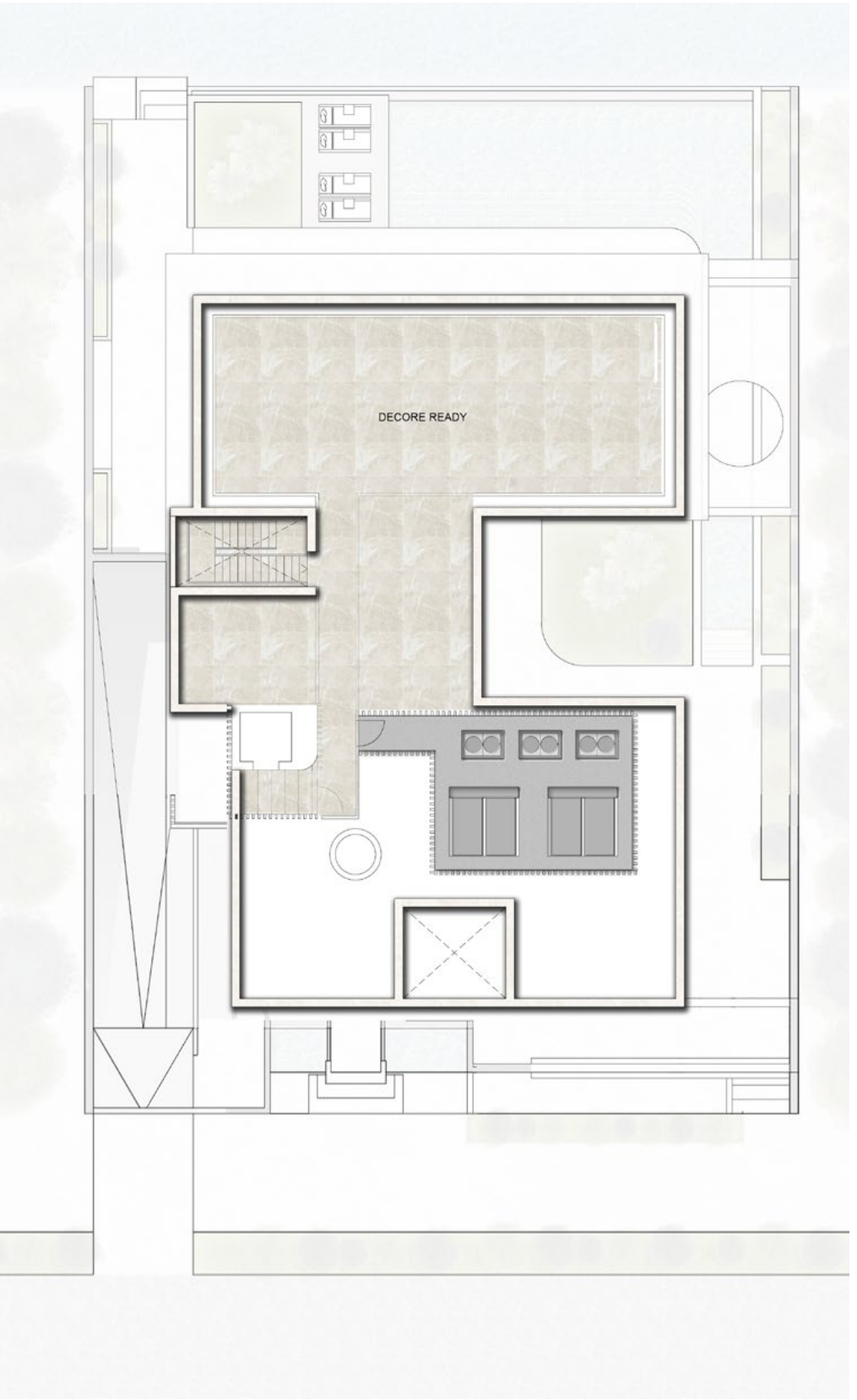
GROUND FLOOR  
265 sqm / 2,850 sqft



FIRST FLOOR  
351 sqm / 3,782 sqft



ROOFTOP





M A I A  
TYPE 2

Amenities

- Double Height Entry

Double Height Spaces

Private Home Elevator

Underground Car Gallery
- Formal Living Area

Two Family Living Areas

Majlis

His & Hers Walk in Closets
- Nanny Room

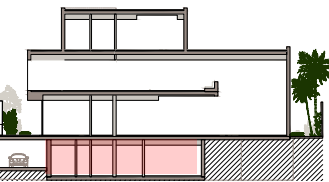
Driver's Room

Maid's Room

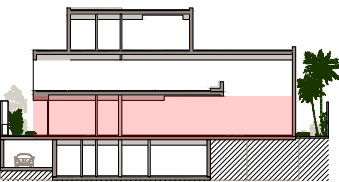
Sunken Garden

Internal Area	725 sqm / 7,804 sqft
Balcony/Terrace	68 sqm / 729 sqft
Garage	199 sqm / 2,139 sqft
<b>Total Area</b>	<b>991 sqm / 10,672 sqft</b>

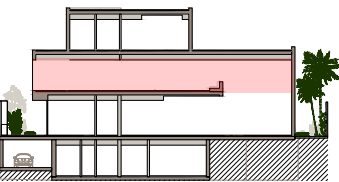
BASEMENT  
375 sqm / 4,040 sqft



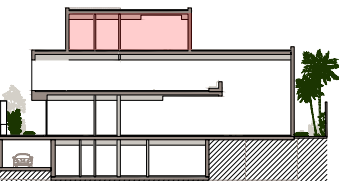
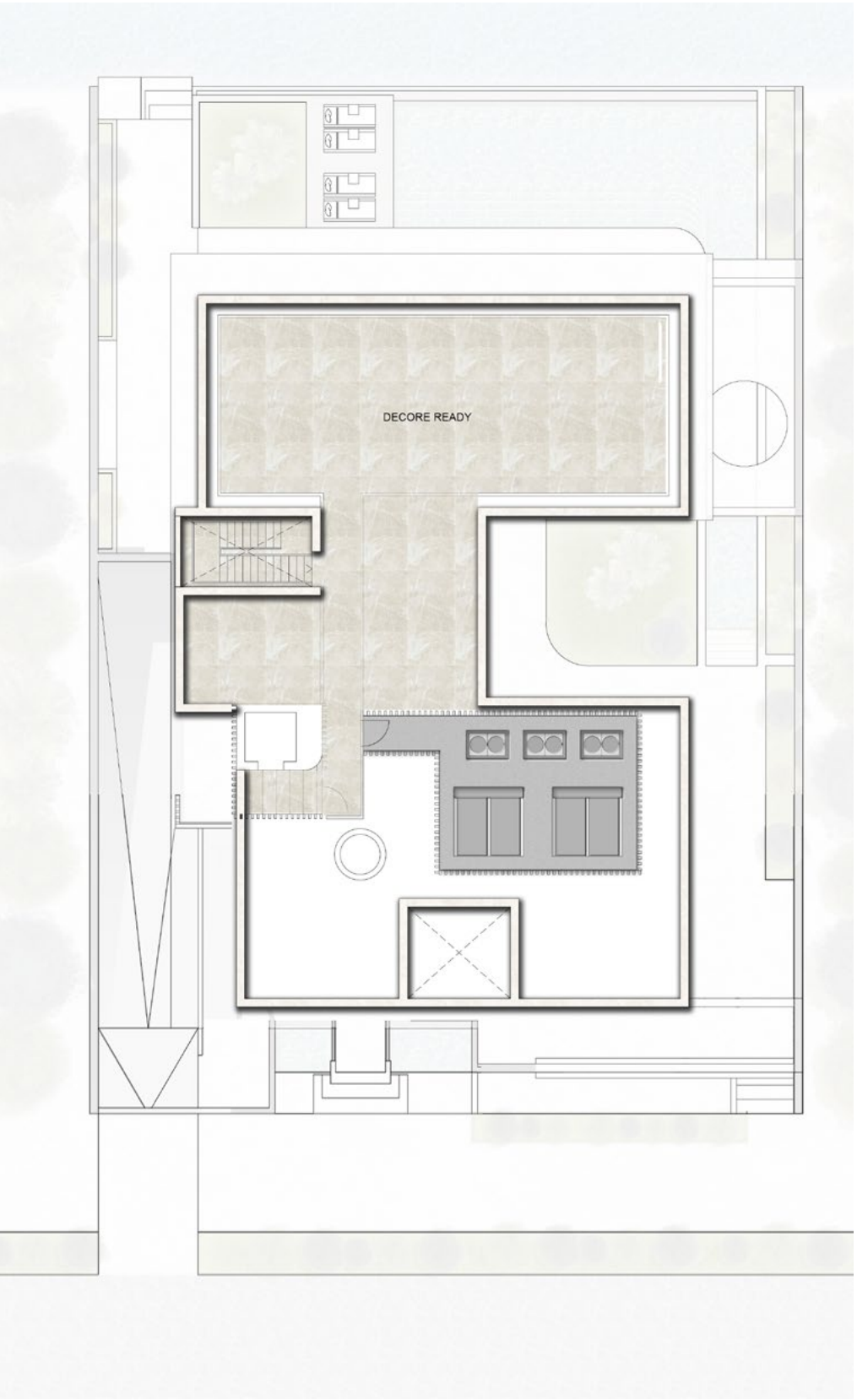
GROUND FLOOR  
265 sqm / 2,850 sqft



FIRST FLOOR  
351 sqm / 3,782 sqft

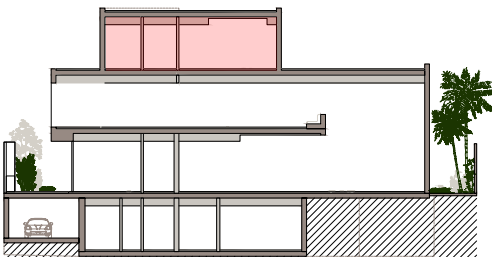


ROOFTOP





ROOF



OPTION 1 - WELL-BEING

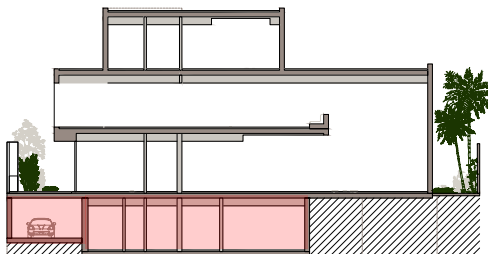


OPTION 2 - ENTERTAINMENT





BASEMENT



OPTION 1 - WELL-BEING  
375 sqm / 4,040 sqft



OPTION 2 - ENTERTAINMENT  
375 sqm / 4,040 sqft





















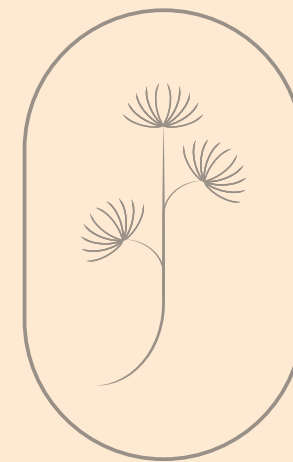








# IRIS











تلال الغاف  
Tilal Al Ghaf

ELYSIAN  
MANSIONS

IRIS - BACK - TIMELESS









تلال الغاف  
Tilal Al Ghaf

ELYSIAN  
MANSIONS

IRIS - FRONT - PRESTIGE



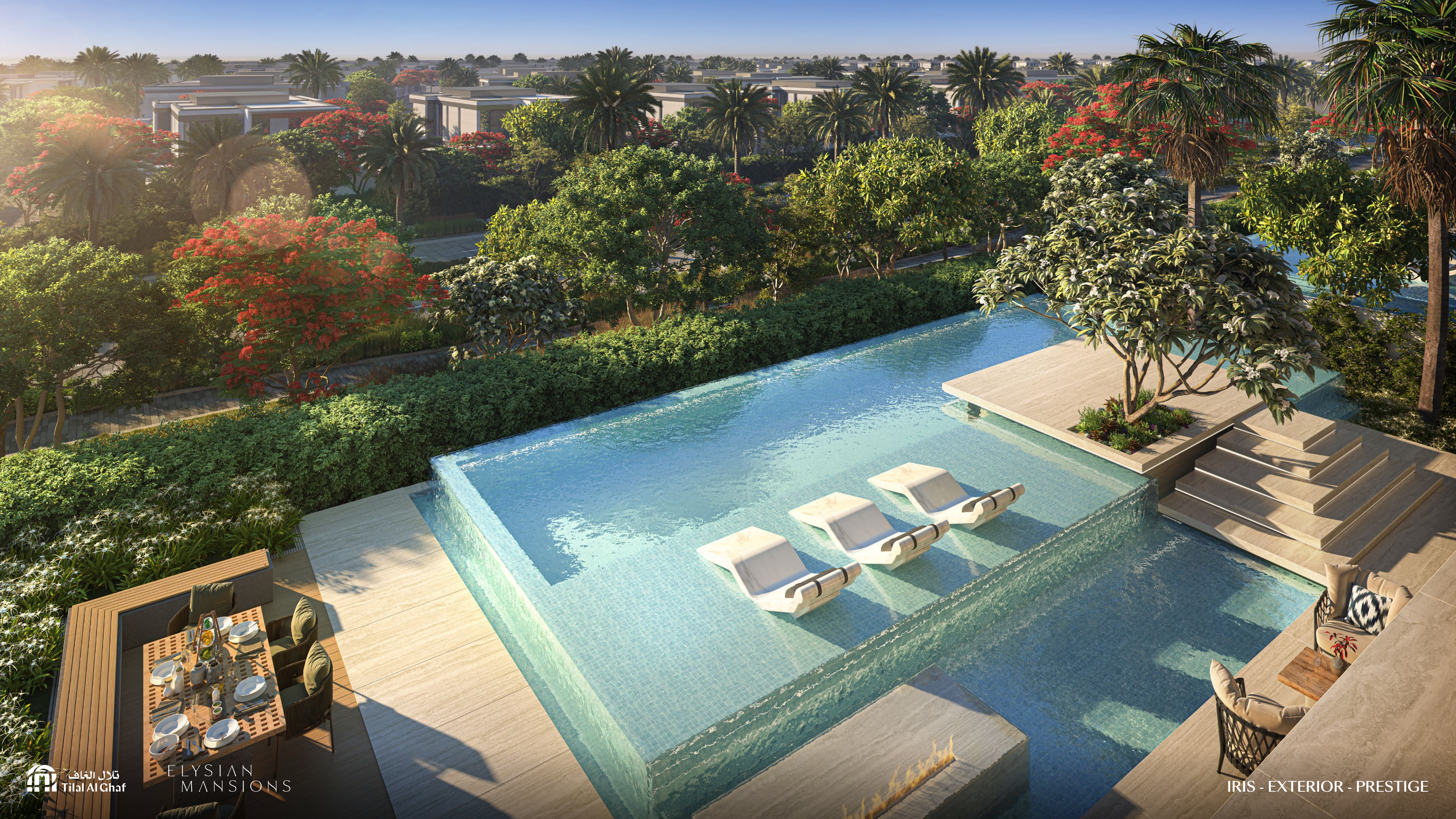


تلال الغاف  
Tilal Al Ghaf

ELYSIAN  
MANSIONS

IRIS - BACK - PRESTIGE





تلال الغاف  
Tilal Al Ghaf

ELYSIAN  
MANSIONS

IRIS - EXTERIOR - PRESTIGE



# IRIS

TYPE 1

### Amenities

- Double Height Entry

Double Height Spaces

Private Home Elevator

Underground Car Gallery
- Formal Living Area

Two Family Living Areas

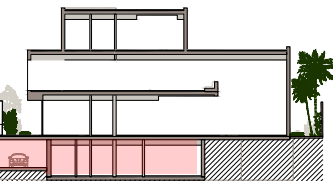
Guest Suite

His & Hers Walk in Closets
- Driver's Room

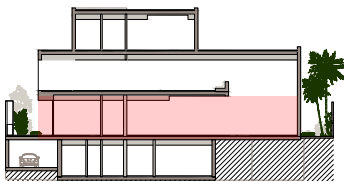
Maid's Room

Internal Area	630 sqm / 6,777 sqft
Balcony/Terrace	47 sqm / 508 sqft
Garage	284 sqm / 3,059 sqft
<b>Total Area</b>	<b>961 sqm / 10,344 sqft</b>

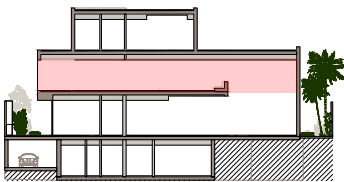
BASEMENT  
437 sqm / 4,704 sqft



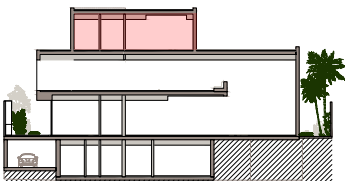
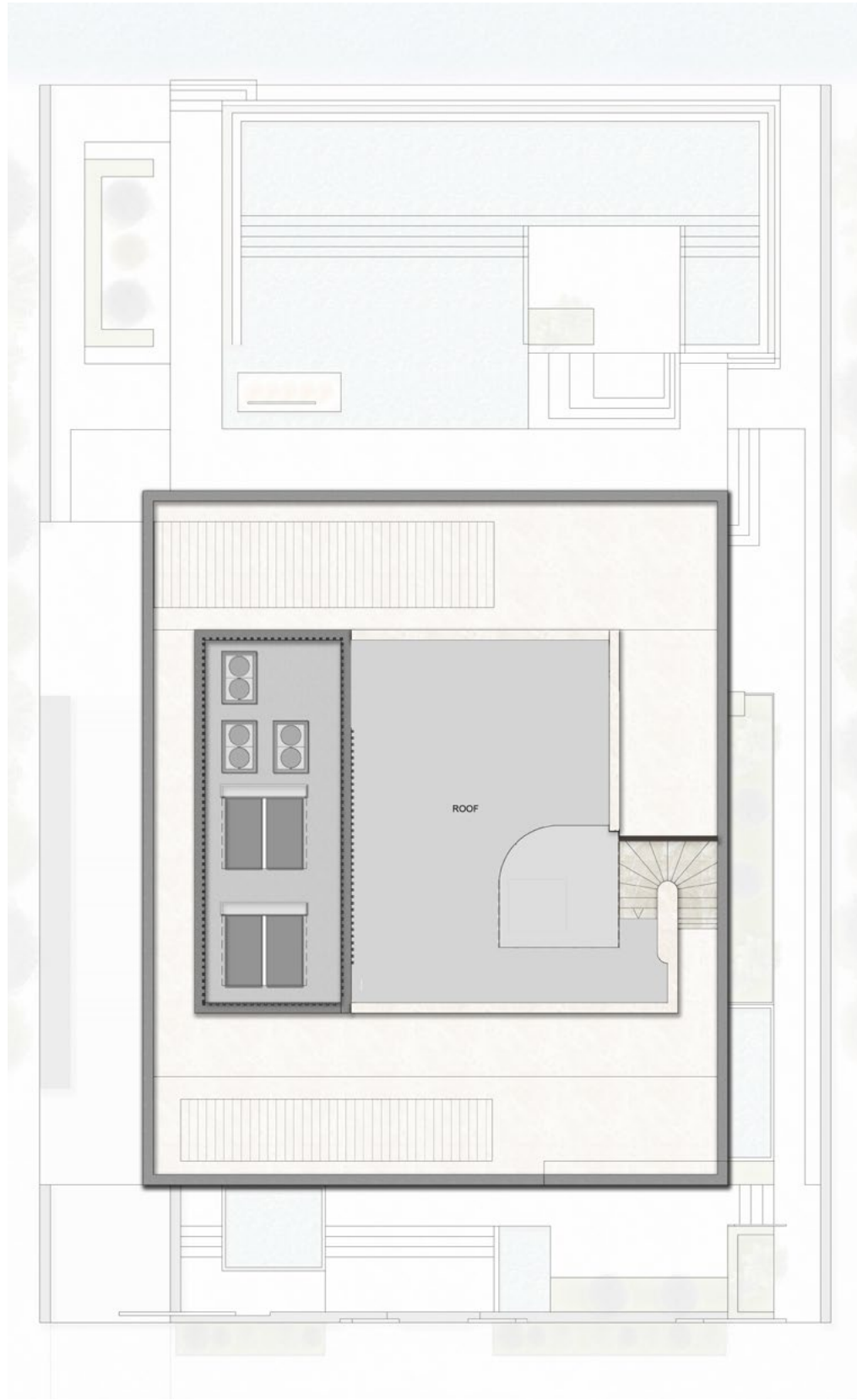
GROUND FLOOR  
250 sqm / 2,689 sqft



FIRST FLOOR  
274 sqm / 2,952 sqft



SECOND FLOOR - ROOFTOP





# IRIS

TYPE 2

## Amenities

- Double Height Entry

Double Height Spaces

Private Home Elevator

Underground Car Gallery
- Formal Living Area

Two Family Living Areas

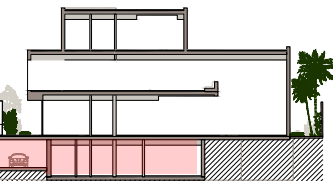
Majlis

His & Hers Walk in Closets
- Driver's Room

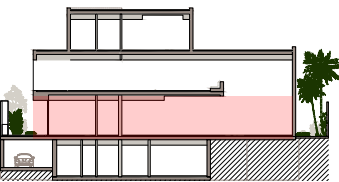
Maid's Room

Internal Area	630 sqm / 6,777 sqft
Balcony/Terrace	47 sqm / 508 sqft
Garage	284 sqm / 3,059 sqft
<b>Total Area</b>	<b>961 sqm / 10,344 sqft</b>

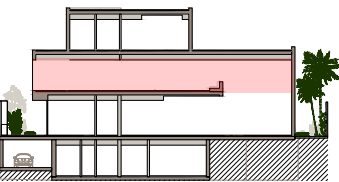
BASEMENT  
437 sqm / 4,704 sqft



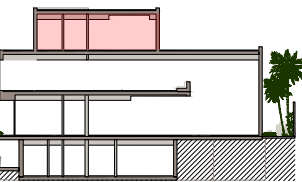
GROUND FLOOR  
250 sqm / 2,689 sqft



FIRST FLOOR  
274 sqm / 2,952 sqft



SECOND FLOOR - ROOFTOP

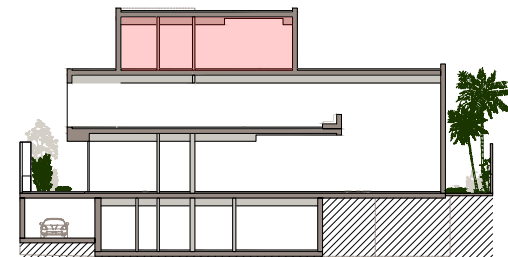




# IRIS

UPGRADES

## ROOF



OPTION 1 - ENTERTAINMENT



OPTION 2 - WELL-BEING

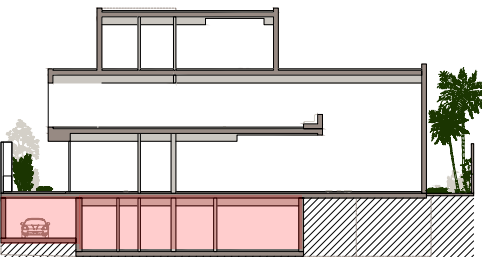




# IRIS

UPGRADES

## BASEMENT



OPTION 1 - ENTERTAINMENT  
437 sqm / 4,704 sqft



OPTION 2 - WELL-BEING  
437 sqm / 4,704 sqft

























# ELYSIAN MANSIONS